

# 27905 STATE HIGHWAY 28, ANDES, NY

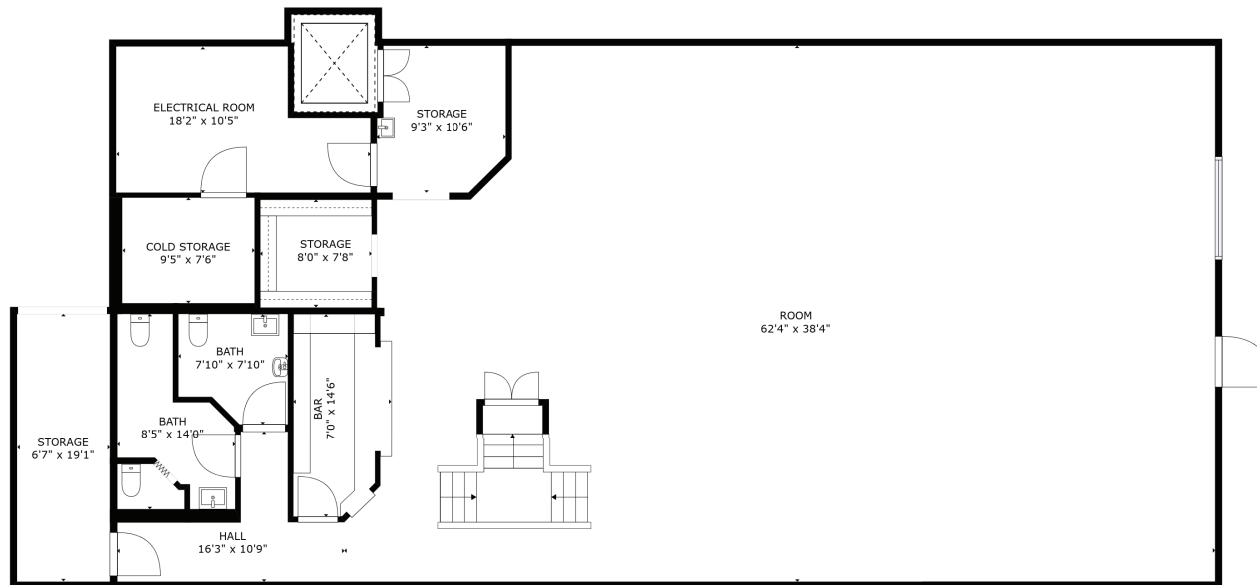
BUILT 2010

BA 4

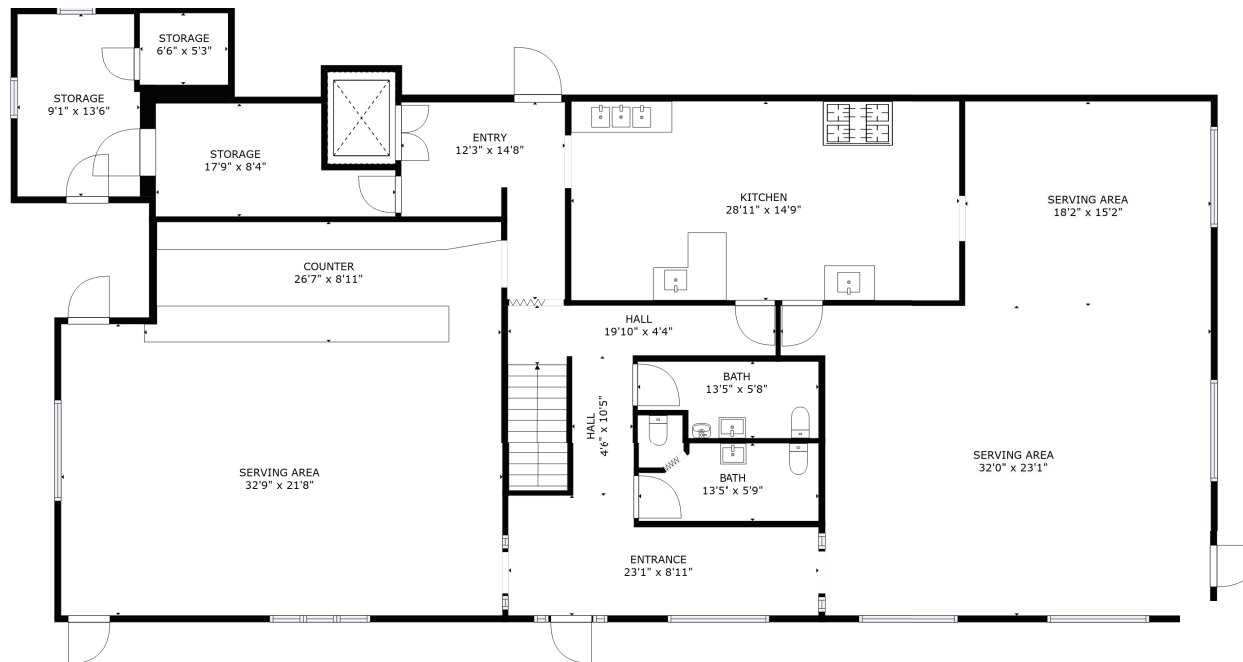
SQ FT 6700

LOT SZ 3.99 ac

LOWER LEVEL: 3100 SQFT



MAIN LEVEL: 3300 SQ FT



GROSS INTERNAL AREA  
FLOOR 1: 3158 sq. ft, FLOOR 2: 3334 sq. ft  
TOTAL: 6492 sq. ft  
SIZES AND DIMENSIONS ARE APPROXIMATE, ACTUAL MAY VARY.